

Meeting:	Safer Bromley Partnership Strategic Group
Date:	27th June 2013
Subject:	Performance Review 2012/2013 (Quarter 4)
Author:	Pratheepan Jeyapragasam, Crime Analyst pratheepan.jeyapragasam@bromley.gov.uk

1 SUMMARY

- 1.1 This report is presented in order to update the Safer Bromley Partnership on the performance achieved against the targets set in the last year Community Safety plan 2012/13. The report provides the latest performance monitoring data to 31st March 2013 (Quarter 4).

2 RECOMMENDATION

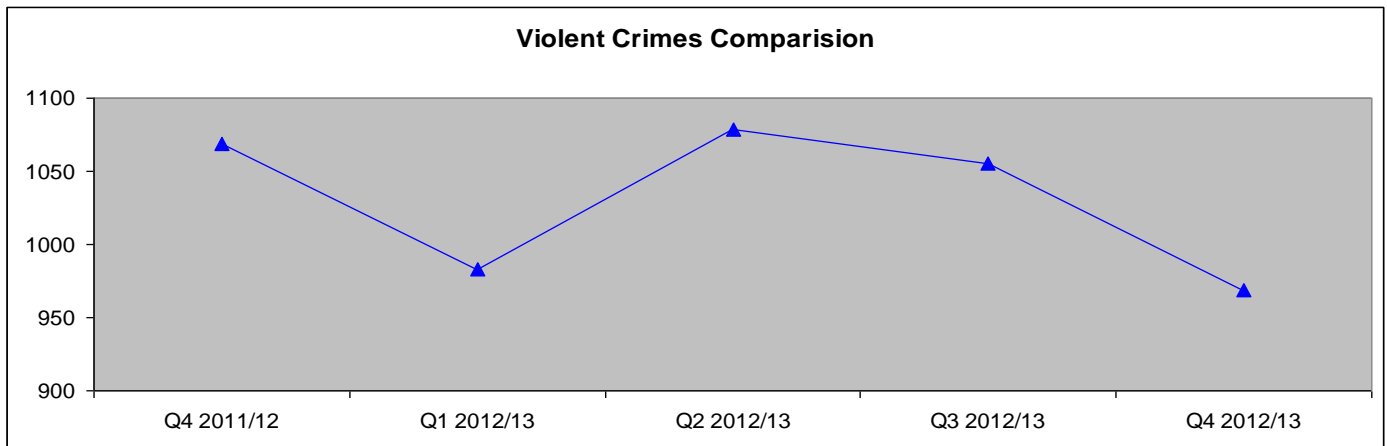
- 2.1 The Strategic Group is asked to:
- Note and comment on the performance information contained within the report.

3 BACKGROUND INFORMATION

- 3.1 This report provides an update of performance at the end of Quarter 4 in the delivery year 2012/2013. The performance picture across the range of Partnership activity continues to be healthy.
- 3.2 A summary of the “portfolio” of offences and Anti Social Behaviour that are included within these overarching targets is provided at Appendix 1. Reporting on individual crime types and detail of individual operations will only be made as a routine if achievement against set targets is not being made or, in some cases, where the measurable rates of individual offences or types of offending are significantly different from expected trends and predicted patterns etc. The management of these operational level issues will be dealt with outside of the Strategic Group at the combined Police/Partnership Tactical Tasking and Coordination Group chaired by the Borough Police Superintendent.

Performance Indicator 1- Reduction in Numbers of Violent Crimes within Bromley

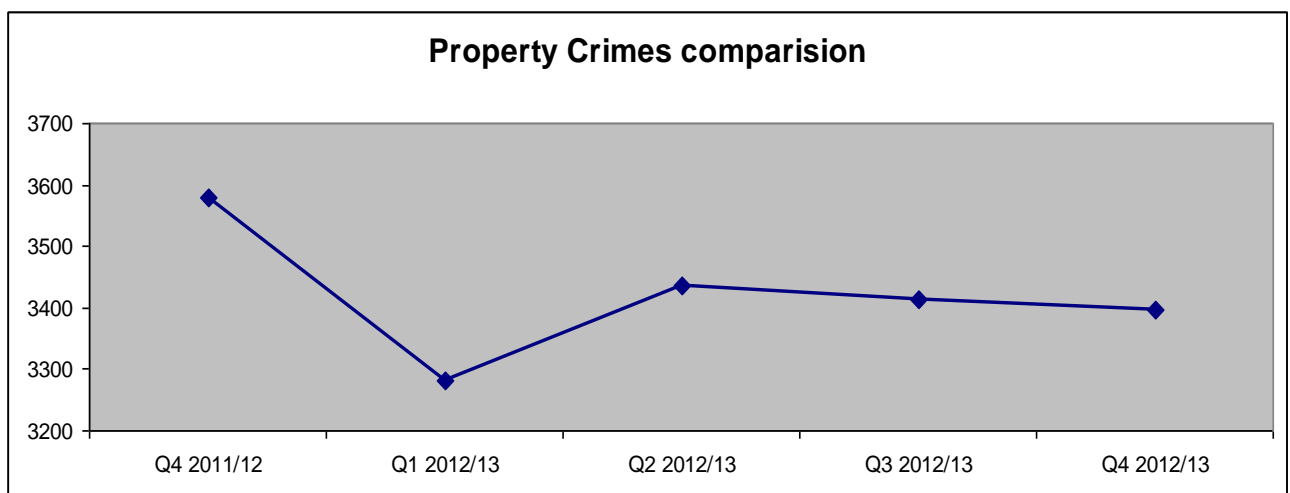
- 3.3 Offences related to Violent Crimes represent 20% of the Total Notifiable Offences in the period of Quarter 4 this year. The chart overleaf provides more detail.



3.4 During the period January to March 2013 there were 969 Total Violent Offences reported to the Police. This represented a reduction of 100(↓ 9%) offences compared with the same period previous year this includes a reduction of 16 Assault with Injury offences and 68 Harassment offences.

Performance Indicator 2- Reduction in Numbers of Property Crimes within Bromley

3.5 Total offences to property Crimes represent 69% of the Total Notifiable Offences in the period of Quarter 4 this year.

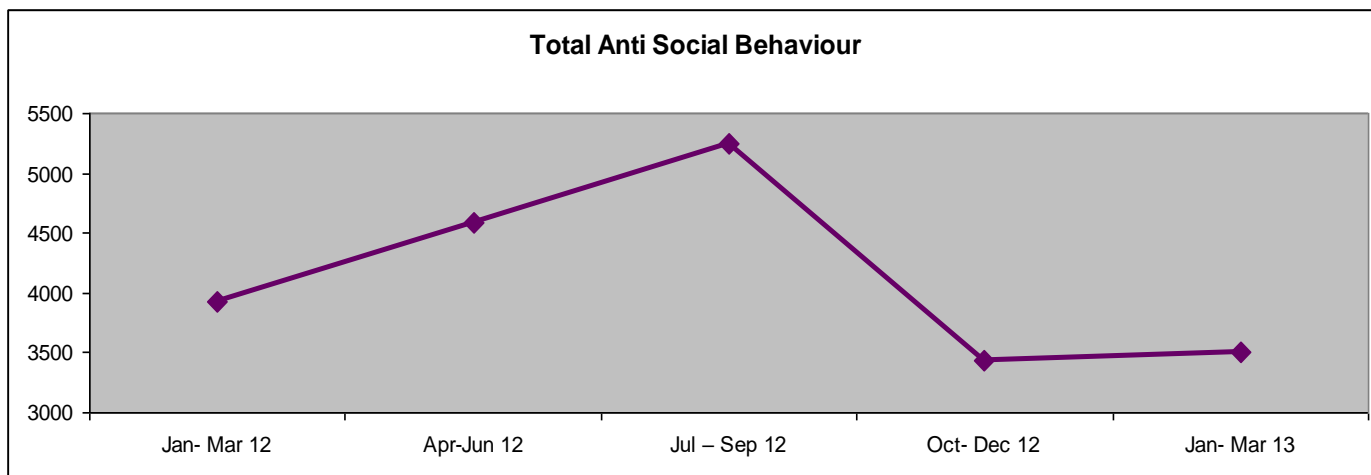


3.6 During the January to March 2013 period of there were 3398 Total Property related Offences reported to the Police, this represented a reduction of 182 (↓5%) offences compared with the same period previous year.

3.7 During this reporting period, the Borough had experienced 882 Burglaries, 132 Robberies, 1891 Theft & Handling and 882 Criminal Damages. Whilst the reduction in levels of overall property crime are positive, it should be noted that, compared with the same period in the previous year, Burglaries were decreased by 15% (161 offences). In relation to Robberies,

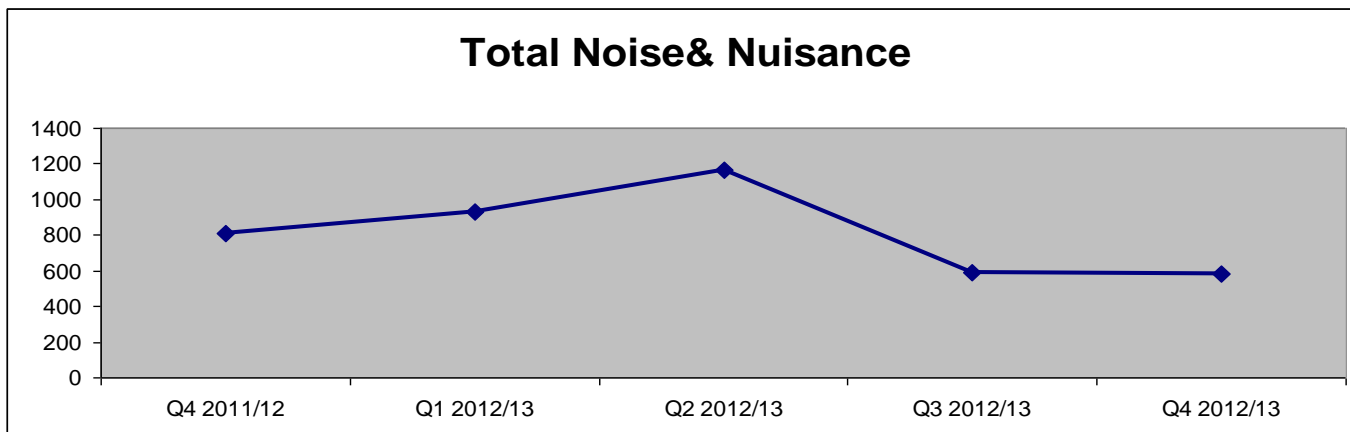
and Criminal Damage, all these offences are decreased. They were decreased by 10% (15 offences) and 18% (111 offences) respectively but there were 6% (105 offences) increased identified in relation to Theft & Handling.

Performance Indicator 3 Reduction in Levels of Recorded Anti Social Behaviour

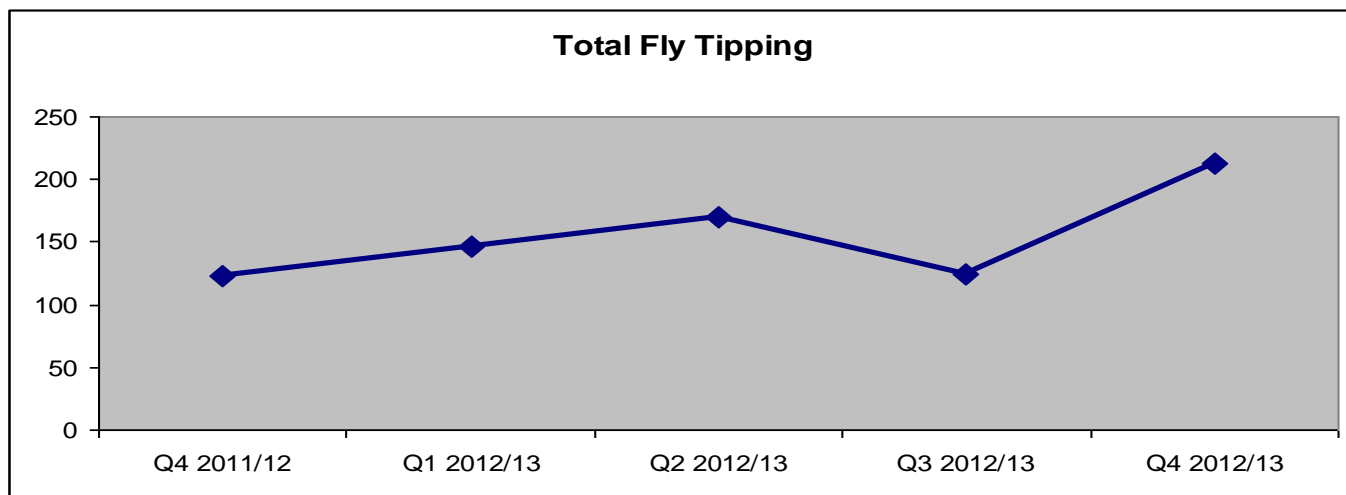


	Jan- Mar 12	Apr- Jun 12	Jul – Sep 12	Oct- Dec 12	Jan- Mar 13
Noise & Nuisance	809	931	1162	589	579
Graffiti	581	1108	787	530	539
Fly Tipping Investigation	123	146	170	124	213
ASB to Council	134	108	126	81	85
ASB to Police	2276	2291	2999	2116	2084
Total ABS	3923	4584	5244	3440	3500

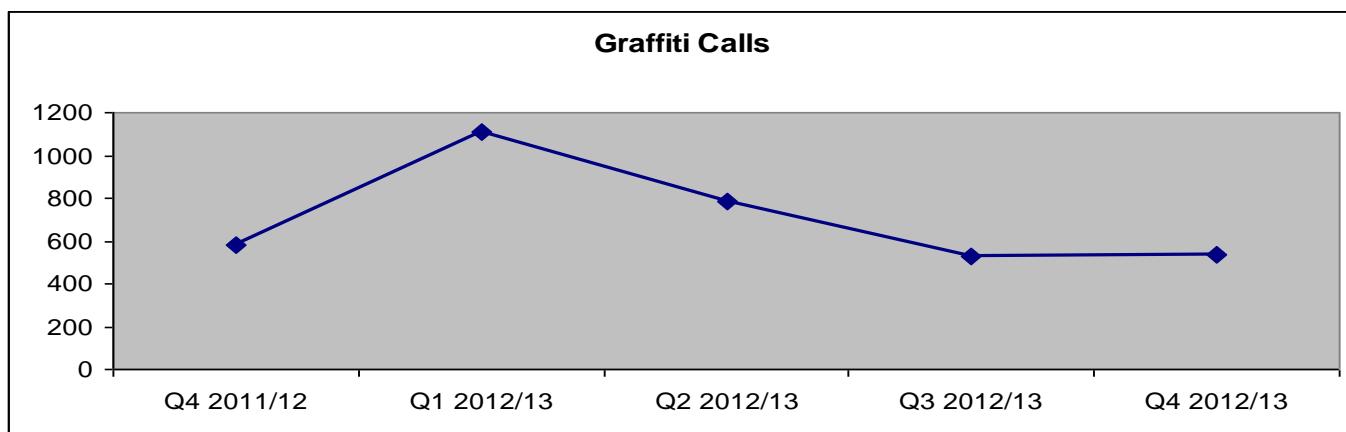
3.8 During the reporting period, the Borough has experienced a reduction of 432 (11%) incidents of ASB reported when compared with the same period last year.



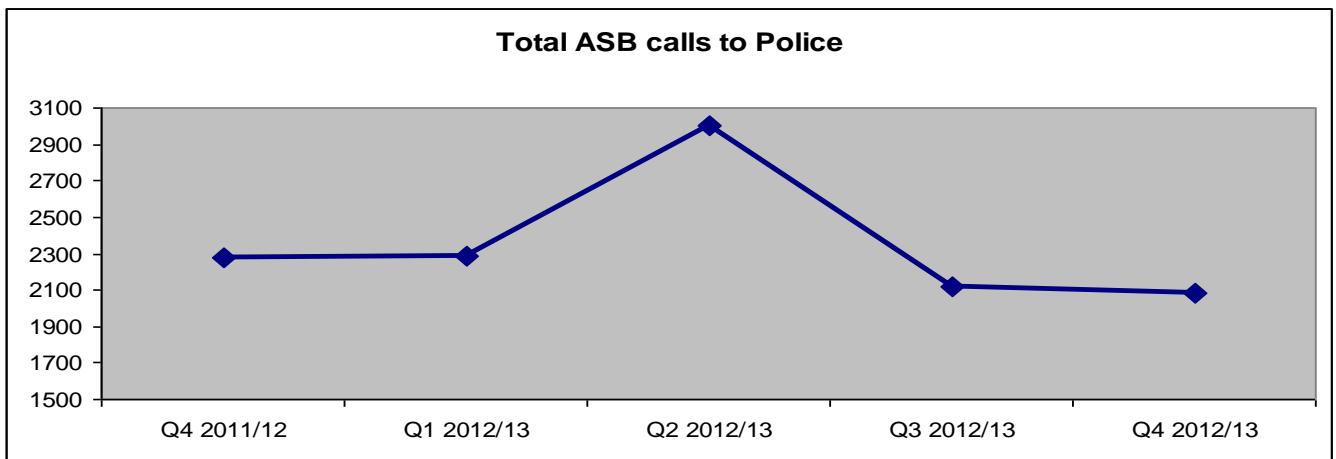
3.9 As can be seen from the figure above, during the reporting period (January to March 2013), the Borough has experienced a reduction of 230 (28%) incidents of Noise and Nuisance ASB reported when compared with the same period last year.



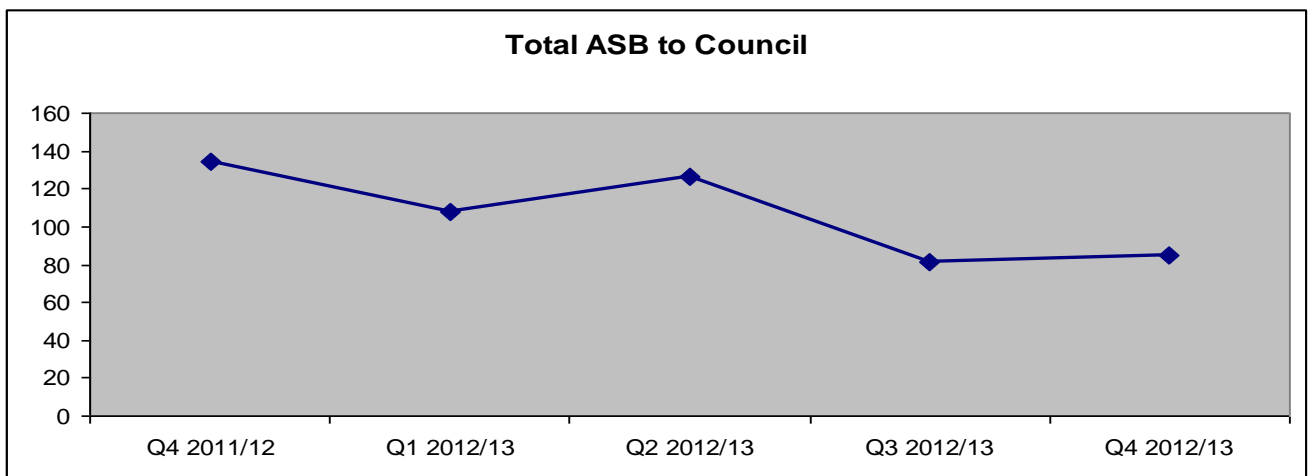
3.10 As can be seen from the figure above, during the reporting period, the Borough has experienced an increase of 90 incidents of Fly Tipping ASB reported when compared with the same period last year.



3.11 As can be seen from the figure above, during the reporting period, the Borough has experienced a reduction of 42 incidents of Graffiti ASB reported when compared with the same period last year.



3.12 During this reporting period it is noted that there was a reduction of 192 incidents reported to police regarding ASB compared with the same period last year.



3.13 During January to March 2013 the Borough has experienced a reduction of 49 incidents of ASB reported when compared with the same period last year.

Performance Indicator 4 Increased Confidence in the Fact that Bromley is a Safe Place

3.14 In relation to this performance indicator, (Question 74AB :) ***“To what extent do you agree that the police and local council are dealing with the ASB and crime issues that matter in this area”*** is no longer published by the Met police. A new question will need to be identified and options are discussed in the paper on 2013/14 targets.

APPENDIX 1

Performance Indicator Portfolios:

Violence Portfolio	
Offences	Supporting Measures
Violence with Injury	Domestic Violence
Common Assault	Domestic Violence Sanction Detection Rate
Harassment	Domestic Violence Arrest Rate
Threats/ Conspiracy to Kill	Serious Youth Violence
Blackmail	Knife Enabled Crime
Kidnapping/ False Imprisonment	Knife Enabled Crime Sanctioned Det. Rate
	Gun Crime
	Gun Crime Sanctioned Det. Rate
	Most Serious Violence
	Most Serious Violence Sanctioned Det. Rate

Property Portfolio
Offences:
Personal Robbery
Commercial Robbery
Total Robbery
Residential Burglary
Non-Residential Burglary
Theft/Taking Motor Vehicles
Theft From Motor Vehicles
Theft From Shops
Theft From Person
Theft of Pedal Cycles
Other Theft
Criminal Damage

Anti Social Behaviour Portfolio
ASB:
Noise & Nuisance
ASB to Council
Fly Tipping
ASB to Police
Graffiti